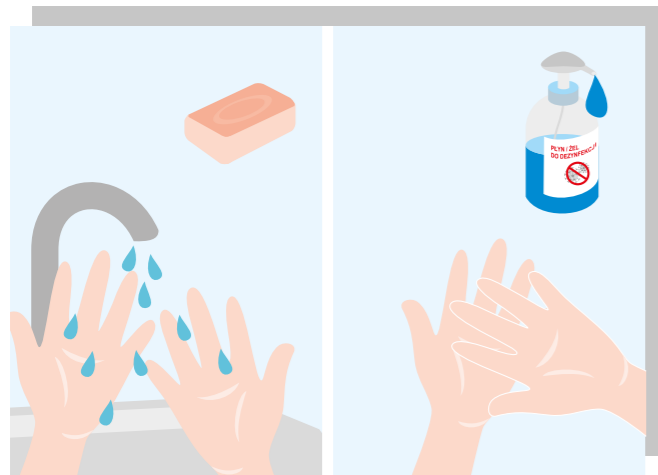


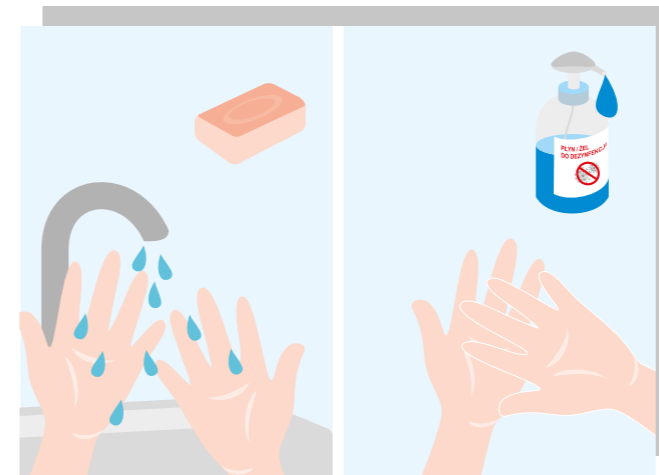
INSTRUCTIONS FOR USE AND DISINFECTION OF A MASK



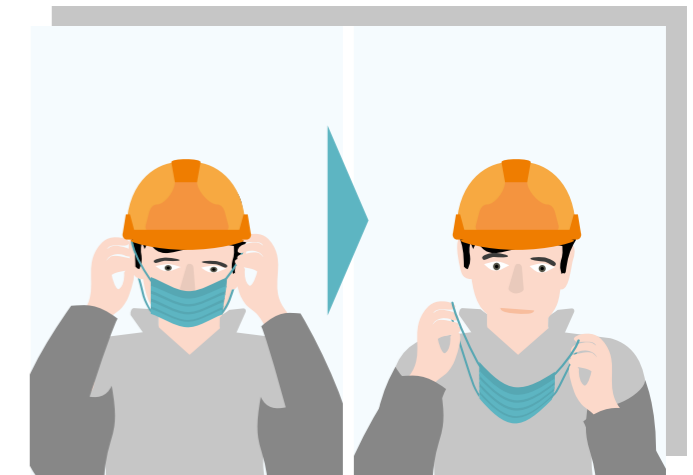
Wash/disinfect your hands before putting on the mask.



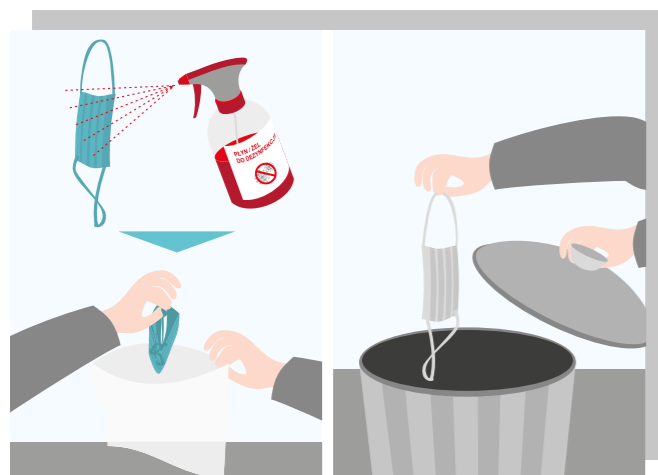
Put on the mask using both hands (pulling the elastics or the strings) so that it fits closely to the face, and covers the nose and mouth fully. Do not touch the material - the front and the back of the mask - with your hands.



Wash/disinfect your hands before taking off the mask.

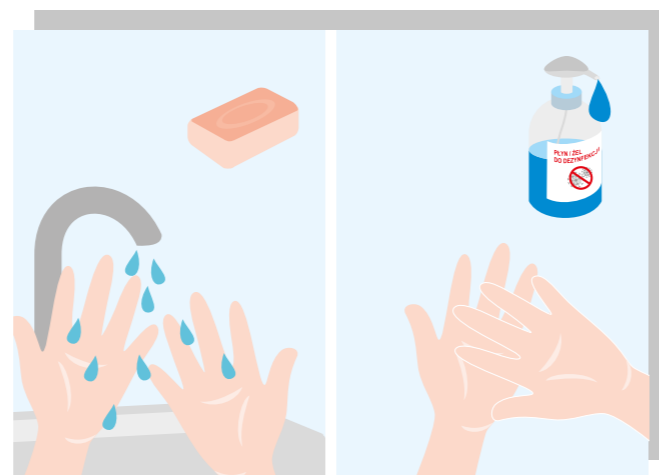


Take off the mask with both hands, pulling the elastics or the strings. Do not touch the material - the front and the back of the mask - with your hands.

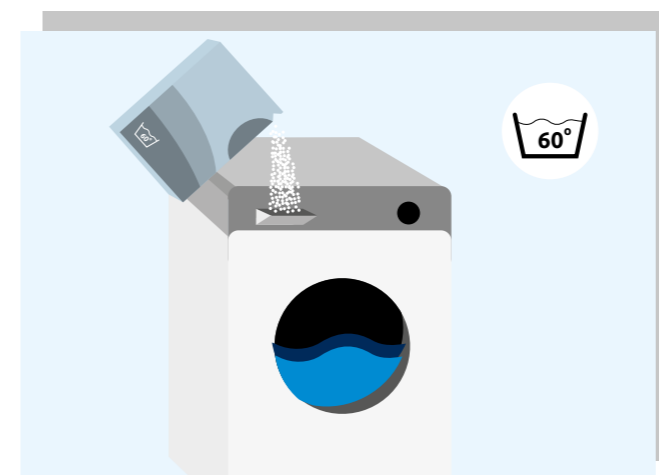


After taking off the mask, spray it with disinfectant and put it in a bag.

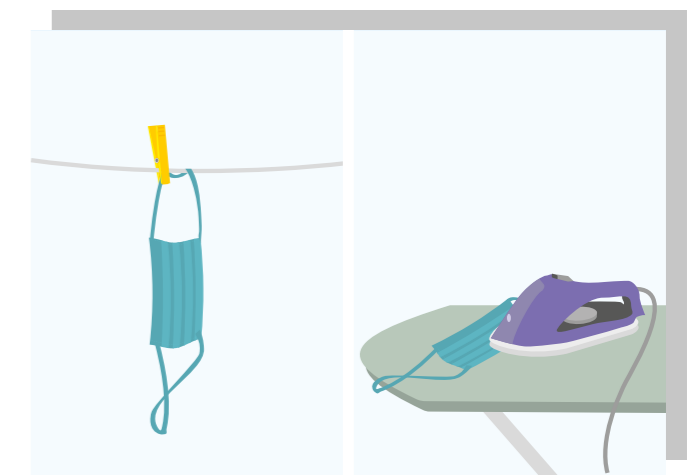
If you use a disposable mask, throw it in the trash.



Wash/disinfect your hands after taking off the mask.



Wash the mask using detergent at 60°C - 90°C (according to the manufacturer's instructions). Wash separately.



Dry the mask thoroughly. Recommended ironing at a temperature set to cotton.